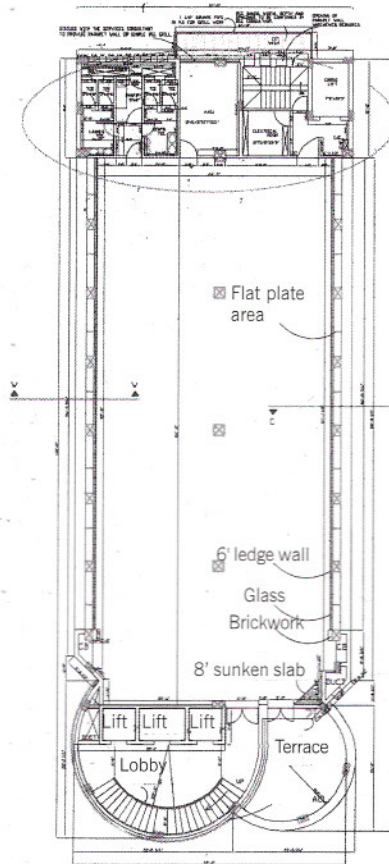
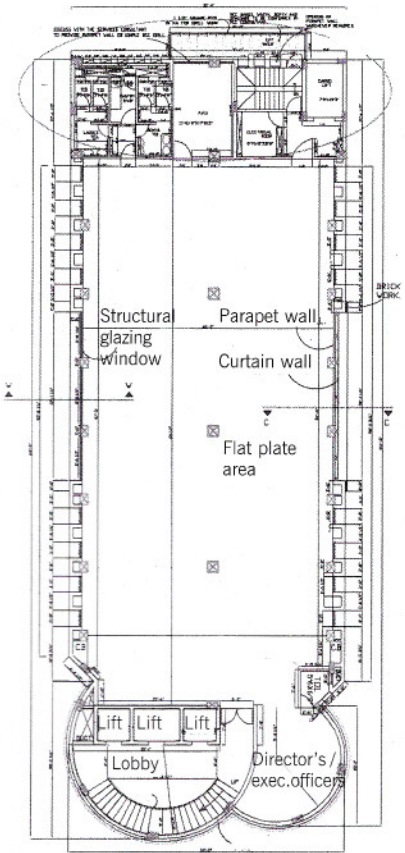


1ST FLOOR PLAN

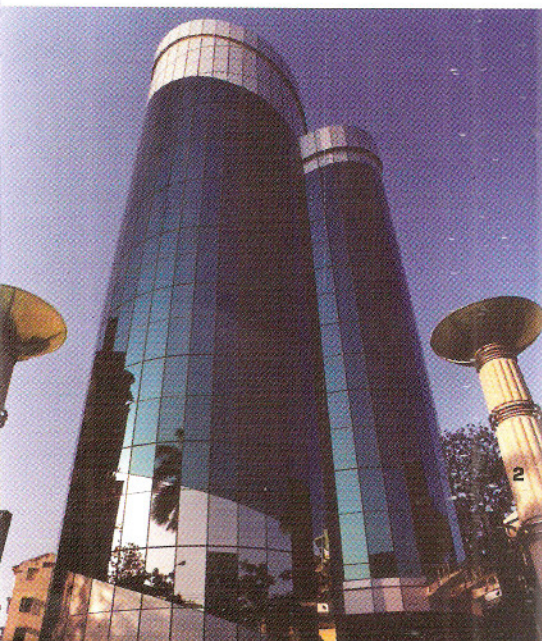


8TH FLOOR PLAN



3,4,5&6 FLOOR PLAN

1. The two circular towers and the cone-shaped lift* block are noticeable from every angle on the road.
2. Up close, the building glimmers because of the heat-reflective blue laminated glass facade.



A coalition between Arihant Foundations Housing Limited(AHFL), Chennai's leading construction house and Nitco Group, one of India's leading building product manufacturers, has given rise to what is touted to be "the most prestigious business landmark of the millennium"- the Arihant Nitco Park. Sited in one of the best corporate locations in Chennai, the Park is a commercial centre to house some of the leading business empires in the country. The building, as required by the brief, is distinctly visible because of its monumental look. "It is an elevation that has been sculpted out with a contemporary feel to it", says Deepak Mehta, the architect. The building site has a narrow frontage, despite the plot size being adequately large; which restricted the scope of a front elevation. Deepak turned this restriction in his favour by creating a strong form. What is most noticeable are two circular towers that rise through the simple rectangular building. In the architect's words, "The two interlocking circles of varying height supplement a very hi-tech aesthetics." Through these circular towers rises the lift room that soars as a cone. A skin of glass envelops the